

C L A S S R O O M

DIAGNOSTIC TOOLS

Overview

Edward G. Rendell
Governor

Tom Gluck
Secretary of Education

Agenda

- SAS Overview
- Pennsylvania Fair Assessments
- CDT Overview
- CDT Key Dates
- CDT Training Plan

SAS Overview



Pennsylvania Fair Assessments

	Diagnostic	Formative	Benchmark	Summative
Purpose	Guide instruction specifically targeted to meet students' needs, including students' strengths and weaknesses	Inform ongoing classroom instruction so that adjustments to instruction can be made	Determine how well students are progressing toward demonstrating proficiency on a set of designated grade-level curriculum content standards	Determine the degree to which students have mastered a designated set of curriculum content standards
Impact on Instruction	A tool that provides alignment to units and lesson plans based upon students' needs	Classroom-based activities integrated into instruction and learning with teachers and students receiving frequent feedback	Low-stakes assessments used to predict how students will do on the high-stakes summative assessments	High-stakes assessments used for accountability
Intended Users of the Results	Students, parents, and teachers	Students and teachers	Students, parents, and teachers	Teachers, parents, administrators, public at large, and district personnel
Examples	Classroom Diagnostic Tools (CDT)	Teacher-selected Classroom assessments Response cards White boards Random selection	Acuity Assess2Know 4-Sight	PSSA Keystone Exams ACCESS for ELLs
Type of Information Provided	Provides a more complete picture of a student's or group of students' strengths and weaknesses so that instruction can be targeted directly at meeting student needs	Provides feedback related to a specific unit or lesson so that feedback can be used to inform classroom instruction and learning during the teaching/learning process	Provides information on the degree to which students have mastered a given concept or how students are progressing toward demonstrating proficiency on grade-level content standards	Provides information on students' mastery of a given set of content standards

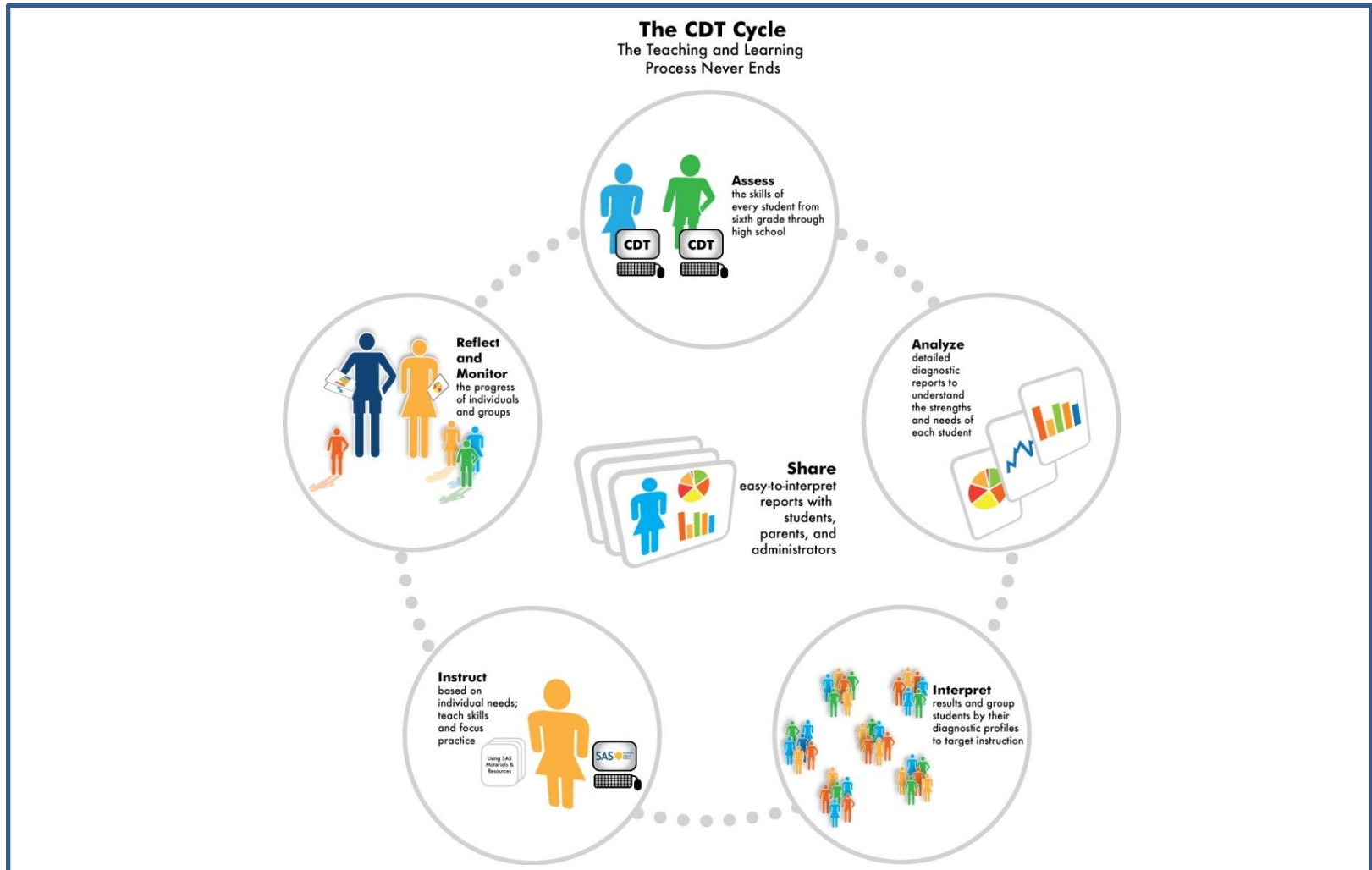
CDT Overview

Students enter our classes with many skills, abilities, competencies, educational goals, and future plans. We continually try to unearth and understand the complexity of students' experiences and development.

Having clarity about our students' strengths allows us to make thoughtful decisions about what we need to teach in a given year and keeps us focused on specific goals. It also helps students to find value in what we are doing, as they are able to see how our teaching is aimed at developing their abilities in an explicit way.

Schnellert, Dattoo, Ediger, and Panas, *Pulling Together*, 2009.

CDT Overview



CDT Key Dates

CDT	Field Test Dates	Rollout Dates
Mathematics	April 26–May 28, 2010	October 18, 2010
Literature	October 4–29, 2010	January 2011
Science	October 4–29, 2010	January 2011
Writing/Composition	May 2011	September 2011
Social Studies	Fall 2012	January 2013

CDT Training Plan

Title	Description	Dates	Location	Audience	Facilitator
<i>Technology Training</i>	Overview Software Installation	August 24, 26, 27,30, Sept 1	Go to Webinars	District Technology Coordinators	DRC
<i>Test Coordinator Training</i>	Overview Test Set-Up and Testing Tools	September 8-10 ; Webinars September 13, 14, 17	PaTTAN sites, Go to Webinars	District Test Coordinators, IU Coordinators	DRC
<i>PAIUCC Overview of CDT</i>	Overview of CDT - 10 minutes	September 17	PAIUCC Meeting, State College	PAIU staff	CDT Core Team: PDE, PaTTAN, IU
<i>CDT Overview to Superintendents, Special Ed Directors, Curriculum Directors, Technology Directors</i>	Overview of CDT - 10 minutes	Per IU Meeting Dates	IUs Across the State	Superintendents, Special Ed Directors, Curriculum Directors, Technical Directors	IU Curriculum Director or Consultant

CDT Training Plan

Title	Description	Dates	Location	Audience	Facilitator
<i>CDT Train the Trainer</i>	Professional Development for CDT 9 AM – 2 PM Brown Bag Lunch	Timeframe: Sept 27 - Oct 8 (TBD)	3 PaTTAN sites and 3 IUs (Rooms and Dates in Planning Stage for 3 IU sites and 3 PaTTANs)	Statewide Consultants (PDE, PaTTAN, IU)	CDT Core Team: IU, PDE, and PaTTAN
<i>CDT District Leadership Roll - Out</i>	Professional Development for CDT 3 hours	TBD	IUs	District Leadership Teams	IU, PaTTAN, and PDE Consultants
<i>CDT Teacher Training</i>	CDT “Hands-On” Application Training	TBD	IU and School Districts	Teachers	District Leaders and IU Consultants

Questions?